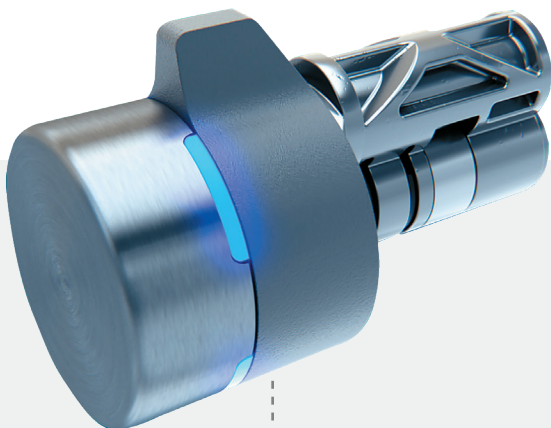


MECHANICAL TO DIGITAL. THE SMART SWITCH.

Switch™ Core, powered by Switch™ Tech, easily replaces the mechanical SFIC in your existing locksets, transforming them into smart digital locks—each with just one quick switch.



SWITCH CORE™

TURNING STANDARD KEYED LOCKS INTO SMART DIGITAL LOCKSETS.

WORKS LIKE A KEY, THINKS LIKE A BOT.

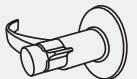
- 1 Touch the Switch Core to wake it.



- 2 The Switch Tech mobile app or fob communicates with the core via BLE to deliver an encrypted access file. Green LEDs indicate when access has been granted.



- 3 Twist to unlock like you'd twist a physical key, then open the door.



- 4 Access is recorded and audits are sent back to your ACS for monitoring.



- Ideal for low- to medium-use cylindrical, mortise, padlocks, display case locks and more.
- A fraction of the cost of most electronic systems—no need to replace the lock.
- Installs in minutes—easily scales across office doors, cabinets, merchandise cases and more.
- Use credentials, not keys—credentials can be added, assigned and reassigned easily.
- Integrates with leading access control systems for single-view monitoring.
- Switches out with most small format interchangeable cores.

SWITCH CORE REIMAGINES ACCESS AT THE CORE.

Get greater control, audit trails, and ACS integration while keeping your mechanical locks. Switch Cores are engineered to be as strong as the SFICs they replace. They have no exposed fasteners or openings, deterring vandalism. They're low-power, so the battery can last a long time. If you're looking for affordable access control that also reduces the time staff spends managing key systems, make the switch to Switch Core.



SWITCH TECH TECHNOLOGY

The Switch Tech platform includes Switch Deck cloud-based software, Switch Bridge, the Switch Tech app for Android or iOS, and Bluetooth fobs.

Switch Core Specifications

Wireless Communication Protocol	Bluetooth Low-Energy 4.2
Knob Dimensions	1.25" (diameter) by 1.17" (length) along with a 0.3" tab for usability
Installation Compatibility	7-pin small format interchangeable core. Not compatible with locks that require "homing," or applications needing weather protection. Please reference user manual compatibility details.
Weight	8 oz.
Battery	CR2477 3V coin cell battery (nonrechargeable)
Code Compliance	BHMA A156.25 – input device (electrified locking devices), BHMA – 156.5 (cylinders and input devices) section 7 Grade 1, BHMA A156.33 (battery), FCC/IC – Part B
Finishes	Standard - 626, 690, 622, 626AM Satin - 606, 612, 619 Bright - 605, 611, 625
Visual Indicator	Full-color LEDs – see user manual for color / flash pattern definitions
Environment	Indoor only, 0 to 50 C / 32 to 122 F, 5% to 95% humidity noncondensing
Audit Event Storage	Up to 3,200 events can be stored in the core's nonvolatile memory
Battery Life	1 to 2 years depending on usage and environment • Up to 1 year with 25 uses per day • Up to 2 years with 10 uses per day Assumes core operating at room temperature (20 to 25 C)
Material	Hardened stainless steel construction of security-related components Meets Grade 1 standards for durability based on internal testing
Security	EAL5+ hardware secure element IC for encryption key storage and secure execution and communication Per-account encryption keys standard Local blacklist store for foolproof user removal
Tools Required	BEST battery removal tool (purchased separately); 1/16" hex key (included)

Switch Core Features

Electronic

- Battery status monitoring / reporting
- Battery change detection
- Battery replacement from exterior
- Capacitive touch wake-up
- Secure electronics encased in hardened stainless steel
- Fail secure for low / dead battery
- Automatic time adjustments
- Firmware updates via secured Bluetooth communication

Mechanical

- High-strength stainless steel construction
- No exposed screws or fasteners
- Battery cap with true architectural finish
- Tabbed knob design for easier use
- Mechanical installation without special tools
- Meets BHMA 156.2 Grade 1 standards for face and vertical impact
- Meets BHMA 156.5 drill resistance standard
- Free spinning knob when not in use – enhances tamper and vandalism resistance

Access Control

- Subscription-based credentials can be assigned and reassigned via primary ACS
- Text and email notifications for a variety of events including low battery and system updates
- Admin control over firmware updates via Switch Deck cloud
- Up to 30 holidays and 16 holiday types
- Compatible with multiple door modes
- Admin override of door mode
- Optional two-factor authentication with smartphones (PIN or on-device biometric)
- Minimal configuration and data of core—most access control data managed on credential (less touring / updating)

To learn how Switch Core can work for you, go to
timeforaswitch.com

